

Main Rear & Right ☆

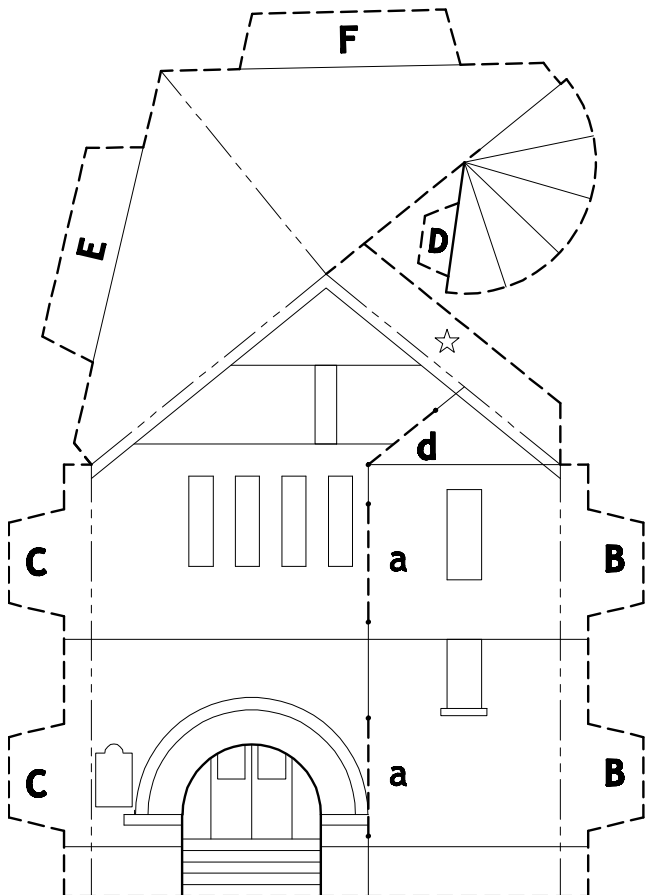
Eustace-Cole Hall
Michigan State University

Famous horticulturist and educator, Liberty Hyde Bailey, designed this building as the first separate horticulture laboratory in America. Completed in 1888, the structure contained rooms for classes and botanical experiments. It exemplified Bailey's pioneering work in scientific investigation of plant life. Its present name commemorates Harry J. Eustace, former chairman of the Horticulture Department. The Honors College now occupies the building.

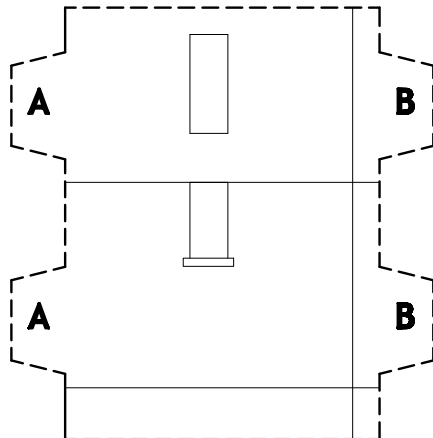


model by:
Daniel E. Bollman, AIA
east arbor architecture

www.eestarbor.com



Front Wing



Round Tower



east arbor
architecture

Daniel E. Bollman, AIA

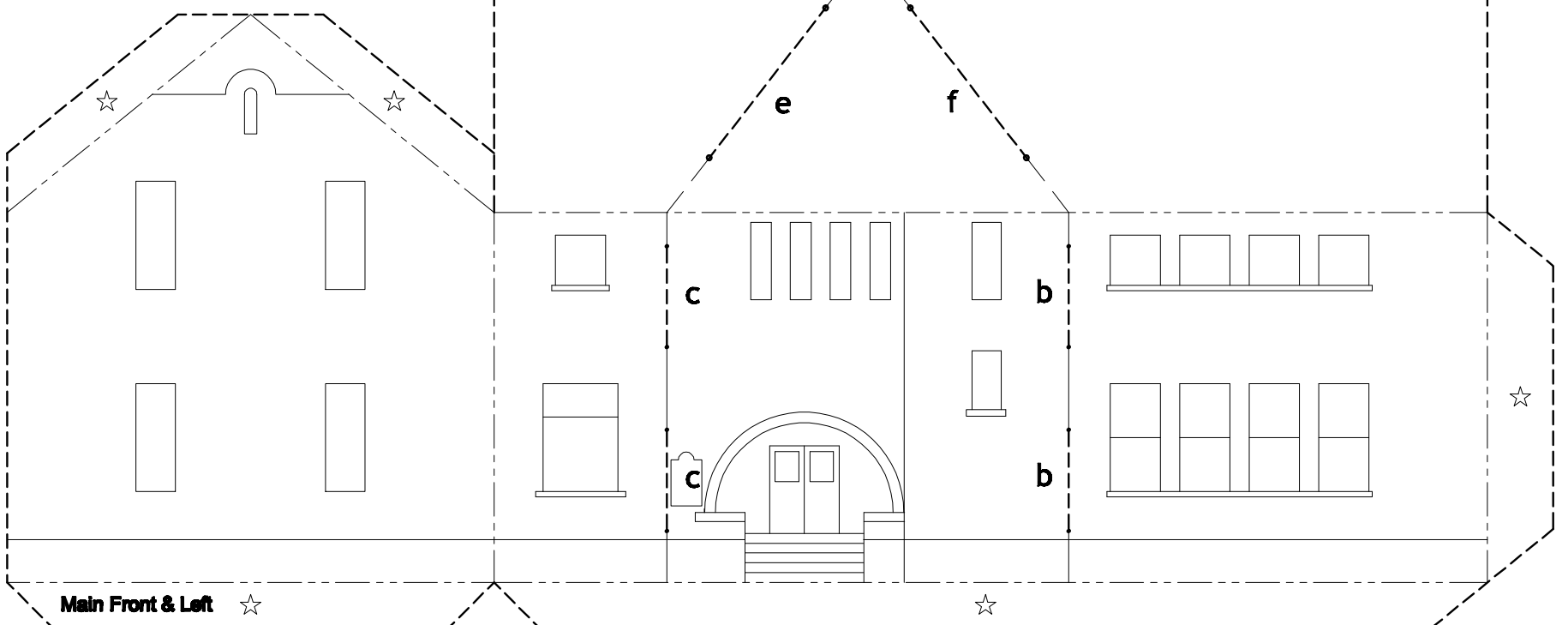
daniel@eestarbor.com
511 Bailey
East Lansing, MI 48823
517.993.8148

Valuable Resource

Assembly:

Cut on the heavy dashed lines. Fold on the broken lines. Cut slots (marked with lower case letters) for corresponding tabs (marked with upper case letters). Curl Tower around a pencil to give it a rounded shape and attach the Tower to the Front Wing. Then add the Tower and Front Wing to the Front Base. Complete by taping or gluing all tabs marked with a ☆, attaching the base last.

- Heavy dashed line = CUT
- - - Broken line = FOLD
- Dotted line = CUT SLOT



Main Front & Left ☆