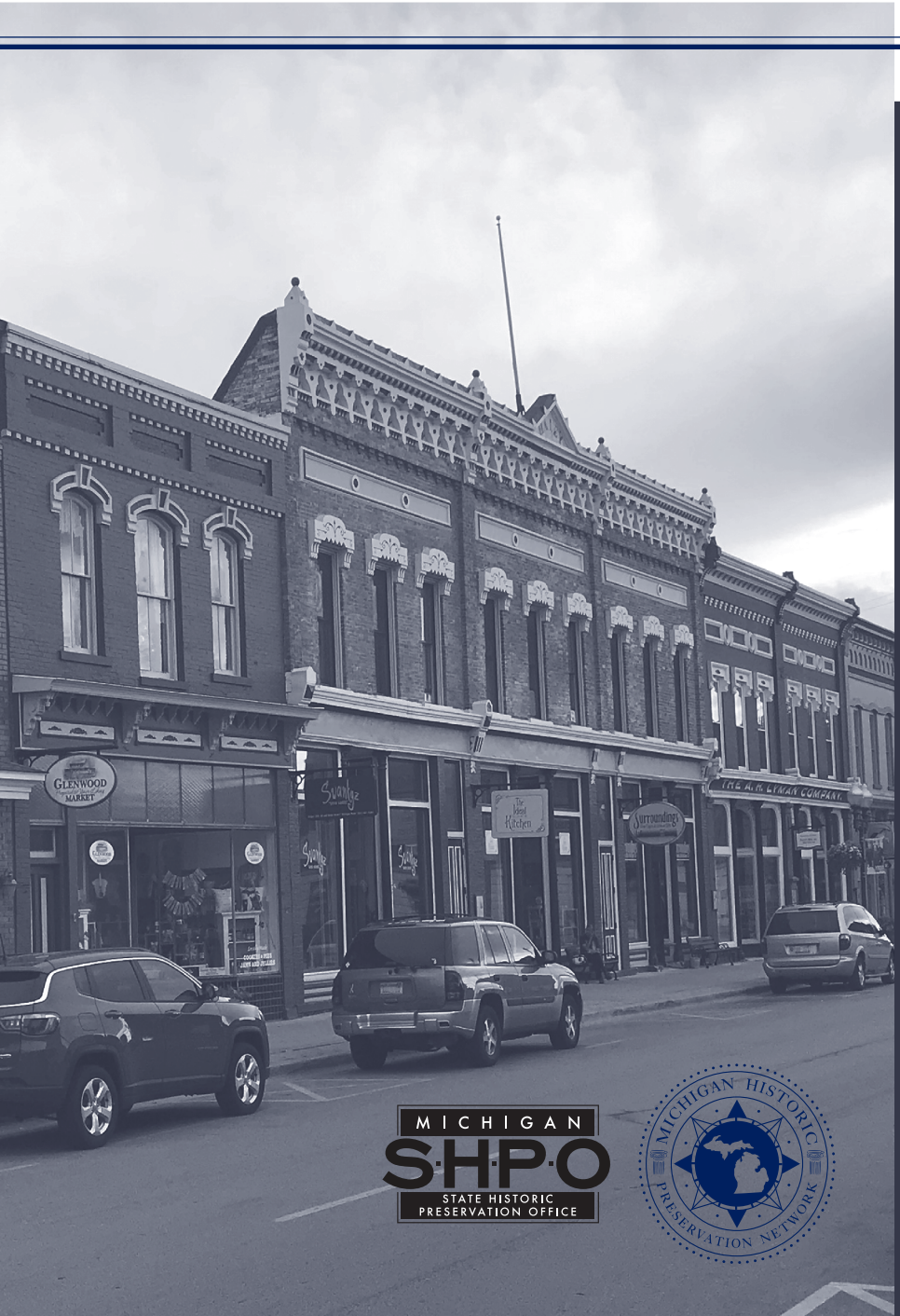


Historic Preservation Terminology Guide



MICHIGAN
S·H·P·O
STATE HISTORIC
PRESERVATION OFFICE



Historic Preservation Terminology

As the field of historic preservation has grown and developed, so has the use of terminology associated with its practice. This guide is presented to assist the understanding of how these terms and phrases are defined in common areas of preservation practice. A number of organizations that are frequently involved in historic preservation activities are also incorporated into the list of definitions.

Adaptive Use	Utilization of a building, structure, or site other than for its historic purpose, normally entailing some modification of the resource.
Adverse Effect (Section 106)	Circumstance in which a “project may alter characteristics that qualify a specific property for inclusion in the National Register in a manner that will diminish the integrity of that property.” ¹
Advisory Council on Historic Preservation (ACHP)	An independent federal agency that “promotes the preservation, enhancement, and sustainable use of the nation’s diverse historic resources and advises the President and Congress on national historic preservation policy.” ¹
Archaeology	The study of past peoples through their material remains. ²
Area of Potential Effects (APE – Section 106)	“The geographic area or areas within which an undertaking may directly or indirectly cause alterations in the character or use of historic properties, if any such properties exist.” [36 CFR Part 800.16(d)]
Certificate of Appropriateness	Written approval of a permit application for work in a local historic district by the Historic District Commission, indicating that the work is appropriate and does not adversely affect a resource.
Certified Local Government (CLG)	A county, township or municipality that has been endorsed by the SHPO and NPS “to participate in the national preservation program while maintaining standards consistent with the NHPA and SOI Standards for Archaeology and Historic Preservation.” ²
Character-defining Features	Prominent or distinctive aspects, qualities, or characteristics of a historic property that contribute significantly to its physical structure or appearance.

**Community
Economic
Development
Association of
Michigan
(CEDAM)**

A statewide non-profit membership organization supporting vibrant, sustainable, and resilient communities through locally driven community economic development.

**Conference on
Michigan
Archeology
(CoMA)**

The oldest and largest body of professional archaeologists in Michigan comprised of archaeologists who work for colleges and universities, state and federal agencies, and private companies.

**Consulting Party
(Section 106)**

Individuals or organizations participating in Section 106 review "due to the nature of their legal or economic relation to an undertaking or affected properties or their concern with the undertaking's effect on historic properties."¹

**Contributing
Resource**

A building, structure, object, or site adding to the significance of a historic district.²

**Cultural Advocacy
Network of
Michigan**

A statewide non-profit organization serving as a collective voice for cultural organizations in Michigan.

Cultural Landscape

"A geographic area, including both cultural and natural resources and the wildlife or domestic animals therein, associated with a historic event, activity, or person or exhibiting other cultural or aesthetic values."²

**Demolition by
Neglect**

Neglecting to maintain, repair, or secure a resource resulting in the deterioration of exterior features and/or loss of structural integrity of the resource.

Design Guidelines

Standards of appropriate activity to preserve the historic and architectural character of a building, structure, object, or site.

Eligible

Meets the criteria for listing in a historic register but is not officially listed.

**Federal
Rehabilitation
Tax Credit**

A 20% income tax credit for the rehabilitation of historic, income-producing buildings listed in or eligible to be listed in the National Register of Historic Places.

Geographical Information System (GIS)	A computer system for capturing, storing, checking, and displaying data related to positions on Earth's surface.
Heritage Tourism	"Traveling to experience the places and activities that authentically represent the stories and people of the past and present." ³
Historic American Building Survey (HABS)/Historic American Engineering Record (HAER)/Historic American Landscape Survey (HALS)	NPS programs that document significant architecture, engineering resources, and landscapes through measured drawings, photographs, and written histories housed at the Library of Congress.
Historic Context	An organizing structure for interpreting history that groups information about historic properties that share a common theme, geographical location, and time period.
Historic District	"A significant concentration, linkage, or continuity of sites, buildings, structures, or objects united historically or aesthetically by plan or physical development." ²
Historic District Commission (HDC)	A local governmental board responsible for overseeing design review for locally designated districts in Michigan.
Historic District Study Committee	A committee appointed by a local government in Michigan to survey a potential historic district and prepare a recommendation report for review and consideration.
Historic District Ordinance	Local law enacted under Michigan PA 169 of 1970 to allow a local unit of government to establish and administer local historic districts, including establishment of a HDC.
Historic Preservation	The process of identifying, protecting, enhancing, and interpreting buildings, structures, sites, objects, districts, and landscapes of historic and cultural significance.

Historic Preservation Easement, Covenant or Agreement	A legal contractual document, either mandatory or voluntary, which protects a significant historic property, either perpetually or for a designated period of time.
Historic Resource	Any prehistoric or historic building, structure, object, or site included in or eligible for a historic register.
Historic Significance	The meaning or value ascribed to a building, structure, object, site, or district based on criteria for evaluation for an established designation program.
Historic Structure Report (HSR)	A report providing documentary, graphic, and physical information about a property's history and existing condition and outlining appropriate treatment and scope of work for repair, changes, and ongoing maintenance.
Historical Society of Michigan	A statewide non-profit membership organization providing educational publications and programming for the public and support for local historical organizations.
Integrity	The ability of a property to convey its significance through its physical features or characteristics.
Intensive Survey	"A systematic, detailed examination of an area designed to gather information about historic properties sufficient to evaluate them against predetermined criteria of significance within specific historic contexts." ²
Inventory	Catalog of buildings, structures, objects, and sites within a specified area including those listed, eligible for listing, or non-eligible for listing in a historic register.
Local Historic District (LHD)	An area, or group of areas, not necessarily having contiguous boundaries, that contains one resource or a group of resources that are related by history, architecture, archaeology, engineering, or culture designated by the local unit of government.
Local Historic Districts Act:	See PA 169 of 1970.
Michigan Anishinaabek Cultural Preservation & Repatriation Alliance (MACPRA)	An alliance of all Michigan federally recognized and two state historic tribes.

Michigan Archaeological Society (MAS)	A statewide archaeological non-profit membership organization, fostering close ties between professionals and avocationalists.
Michigan Architectural Foundation (MAF)	A statewide non-profit organization dedicated to advancing public awareness of how architecture enriches life.
Michigan Association of Counties (MAC)	A statewide non-profit membership organization representing county governments.
Michigan Association of Planning (MAP)	A non-profit membership organization promoting quality community planning through education, information, and advocacy.
Michigan Barn Preservation Network	A statewide non-profit membership organization promoting appreciation, preservation, and rehabilitation of Michigan barns, farmsteads, and rural communities.
Michigan Centennial Farm	A farm of over 10 acres that has been owned by the same family for over 100 years, certified by the Historical Society of Michigan.
Michigan Community Revitalization Program (MCRP)	A program of MEDC providing “grants, loans or other economic assistance for eligible projects located on properties that are either contaminated (facility), blighted, functionally obsolete, or historic resources.” ⁴
Michigan Council for Arts and Cultural Affairs	A division of MEDC dedicated to “ensuring that every citizen and community in Michigan enjoys the civic, economic and educational benefits of arts and culture.” ⁴
Michigan Department of Environment, Great Lakes, and Energy (EGLE)	A department of state government with mission “to protect Michigan’s environment and public health by managing air, water, land, and energy resources.”
Michigan Downtown Association	A statewide non-profit membership organization supporting the interest and growth of downtowns and communities throughout Michigan.

Michigan Economic Development Corporation (MEDC)	A quasi-public department of state government that “markets Michigan as the place to do business, assists businesses in their growth strategies and fosters the growth of vibrant communities across the state.” ⁴
Michigan Historic Preservation Network (MHPN)	A statewide non-profit historic preservation membership organization “advocating for Michigan’s historic places to contribute to the economic vitality, sense of place, and connection to the past.”
Michigan Historical Commission	State commission advising the Department of Natural Resources on historical artifacts and materials and on the dissemination of information on Michigan’s history including the historical marker program.
Michigan Historical Marker Program	Historic sites, events, objects, subjects, and persons having historic significance to the state of Michigan marked at a significant location by signage erected under authority of the Michigan Historical Commission (PA 10 of 1955).
Michigan History Center	A state agency preserving, protecting, and sharing Michigan’s history through twelve museums and historic sites and the State Archives.
Michigan Lighthouse Assistance Program (MLAP)	A State grant program, funded by the sale of “Save our Lights” license plates, to assist lighthouse stewards in the repair and rehabilitation of historic lighthouses.
Michigan Main Street (MMS)	A program administered by MEDC that “assists communities in revitalizing and preserving their traditional commercial districts”. ⁴
Michigan Museums Association (MMA)	A statewide non-profit membership organization advancing Michigan’s museum community through shared learning, advocacy and collaboration.
Michigan Municipal League (MML)	A statewide non-profit membership organization representing city and village governments.
Michigan Townships Association (MTA)	A statewide non-profit membership organization representing township governments.
Michigan State Register of Historic Sites	The list of historic sites, events, objects, subjects, and persons having historic significance to the state of Michigan marked at a significant location through the Michigan Historical Marker Program (PA 10 of 1955).

Michigan Underwater Preserve System	A system of thirteen Great Lakes Bottomlands protecting shipwrecks in almost 7,200 square miles of coastal waters.
Mitigation	An action to minimize or offset an adverse effect to a historic property.
Memorandum of Agreement (MOA) – Section 106)	A formal document used to outline an agreement between separate entities, groups, or individuals.
Mothball	Temporary measures to protect a building from weather and vandalism.
National Alliance of Preservation Commissions (NAPC)	A national non-profit membership organization supporting local historic preservation commissions.
National Environmental Policy Act (NEPA)	A federal law that requires federal agencies to evaluate the environmental and related social and economic effects of their proposed actions.
National Historic Landmark (NHL)	“A district, building, structure, site, or object of national significance, designated by the U.S. Secretary of the Interior for possessing exceptional value or quality in illustrating or interpreting the heritage of the United States.” ²
National Historic Lighthouse Preservation Act (NHLPA)	An amendment to the NHPA that provides a mechanism for the disposal of Federally-owned historic light stations that have been declared excess to the needs of the responsible agency.
National Historic Preservation Act (NHPA)	A federal law that fosters the identification, evaluation, and protection of historic and prehistoric resources in the United States enacted in 1966.
National Main Street Center (Main Street America)	A subsidiary of NTHP that directs “a nationwide network to encourage preservation-based community revitalization.” ³
National Oceanic and Atmospheric Administration (NOAA)	A federal agency with mission is to understand and predict changes in climate, weather, oceans, and coasts, and to conserve and manage coastal and marine ecosystems and resources.

National Park Service (NPS)	“A federal agency within the Department of the Interior that works to preserve unimpaired the natural and cultural resources and values of the National Park System for the enjoyment, education, and inspiration of this and future generations.” ² The agency oversees multiple programs provided through the NHPA.
National Register Criteria for Evaluation (Criteria)	The established measurement for assessing the eligibility of properties for inclusion in the NRHP.
National Register of Historic Places (NRHP)	The Official list of the nation’s historic places worthy of preservation. ²
National Trust for Historic Preservation (NTHP)	National non-profit membership organization that “protects significant places representing the nation’s diverse cultural heritage.” ³
Non-Contributing Resource	A building, structure, object, or site that does not add to the significance of a historic district. ²
Period of Significance	Span of time in which a property attained the importance for which it meets the criteria for historic designation. ²
Preservation (SOI Standard)	“The act or process of applying measures necessary to sustain the existing form, integrity, and materials of a historic property.” ²
Preservation Action	A national preservation grassroots lobbying non-profit membership organization.
Preservation Plan	Document that details goals, priorities, and strategies for identification, evaluation, registration, and protection of historic properties and for promotion of and education on historic preservation. ²
Programmatic Agreement (PA – Section 106)	A document that spells out the terms of a formal, legally binding arrangement between two or more agencies that have undertakings with similar or repetitive effects on historic properties.
Public Act 169 of 1970, as amended (PA 169)	Michigan law, also known as Michigan’s Local Historic Districts Act, that provides a legal foundation for the creation and administration of local historic districts.

Pure Michigan	A division of MEDC working to attract, grow and retain tourism throughout the state.
Qualified Rehabilitation Expenditures (QRE)	The cost of work on a historic building used to calculate rehabilitation tax credits.
Reconnaissance Survey	“An examination of all or part of an area accomplished in sufficient detail to make generalizations about the types and distributions of historic properties that may be present.” ²
Reconstruction (SOI Standard)	“The act or process of depicting, by means of new construction, the form, features, and detailing of a non-surviving site, landscape, building, structure, or object for the purpose of replicating its appearance at a specific period of time and in its historic location.” ²
Rehabilitation (SOI Standard)	“The act or process of making possible a compatible use for a property through repair, alterations, and additions while preserving those portions or features which convey its historical, cultural, or architectural values.” ²
Restoration (SOI Standard)	“The act or process of accurately depicting the form, features, and character of a property as it appeared at a particular period of time by means of the removal of features from other periods in its history and reconstruction of missing features from the restoration period.” ²
Revolving Loan Fund	A self-replenishing pool of money available to leverage historic rehabilitation projects.
Secretary of the Interior’s Standards (SOI Standards)	Typically refers to the Standards for Treatment of Historic Properties—Preservation, Rehabilitation, Restoration, & Reconstruction. However, Standards are also available for Preservation Planning, Identification, Evaluation, Registration, Qualification, and Historical, Archaeological, Architectural, and Engineering Documentation.
Section 106 (of the NHPA)	The process required of federal agencies to consider the effects of projects they carry out, permit, or fund on historic properties (54 U.S.C. 306108).
Significance	See Historic Significance.

State Archaeological Site File	The official record of archaeological sites and surveys in Michigan.
State Archaeologist	The individual designated to guide statewide research and preservation efforts and serve as a resource regarding laws, procedures, educational programs, and other aspects of archaeology within the state.
State Historic Preservation Office (or Officer) (SHPO)	Established by the NHPA, the agency in each state or territory that administers the national historic preservation program. The Officer is appointed by the Governor to oversee its functions.
State Historic Preservation Review Board	The State of Michigan Board appointed to review and approve each National Register nomination for submission to the Keeper of the National Register; to have appellate jurisdiction under the Local Historic Districts Act, as amended, and provide general advice, guidance, and professional recommendations to the State Historic Preservation Office.
Traditional Cultural Property	A property eligible for inclusion in a historic register based on its associations with the cultural practices, traditions, beliefs, lifeways, arts, crafts, or social institutions of a living community. ²
Tribal Historic Preservation Office or Officer (THPO)	The agency designated within a federally-recognized Native American Tribe that administers the NHPA. The Tribal Member overseeing its function is the Officer. (Eight of twelve federally-recognized Tribes in Michigan have established THPOs.)
Undertaking (Section 106)	A project, activity, or program funded in whole or in part under the direct or indirect jurisdiction of a Federal agency, including (1) those carried out by or on behalf of the Federal agency; (2) those carried out with Federal financial assistance; (3) those requiring a Federal permit, license, or approval; and (4) those subject to State or local regulation administered pursuant to a delegation or approval by a Federal agency. [54 U.S.C. 300320]"

Definitions from:

1 Advisory Council on Historic Preservation. www.achp.gov

2 National Park Service. www.nps.gov

3 National Trust for Historic Preservation. www.savingplaces.org

4 Michigan Economic Development Corporation. www.michiganbusiness.org



Front cover: Downtown Manistee, Michigan.

Photo credit: Michigan Historic Preservation Network

Back cover: Seul Choix Point Lighthouse, Gulliver, Michigan.

Photo credit: Michigan Historic Preservation Network

This publication is supported by

